





Nestled in the tranquil cul-de-sac of Westerhope Court, Cockerton village, this impressive semi-detached house offers a perfect blend of modern living and comfort. The property boasts a stunning open-plan refitted kitchen/dining area, ideal for both entertaining guests and enjoying family meals. The well-appointed living room features elegant French doors that open up to a private rear garden, creating a seamless connection between indoor and outdoor spaces.

Upstairs, the landing provides access to three generously sized double bedrooms, ensuring ample space for relaxation and rest. The master bedroom benefits from an en-suite bathroom, while a well-designed family bathroom serves the other two bedrooms, making this home practical for families or those who enjoy hosting visitors.

Additional features include a driveway and garage, providing convenient off-street parking and extra storage. The location offers easy access to local shops and schools, making it an ideal choice for families

This modern home is sure to impress upon internal viewing, showcasing its thoughtful design and inviting atmosphere. Whether you are looking to settle down or invest, this property presents a wonderful opportunity in a desirable area.







- EXTENDED IMPRESSIVE PROPERTY
- CUL-DE-SAC
- STUNNING OPEN PLAN KITCHEN/DINER
- THREE DOUBLE BEDROOMS
- MATURE, ESTABLISHED GARDENS
- LOCATED WITHIN THIS HIGHLY REGARDED LOCATION
- STYLISH READY TO MOVE INTO
- LARGE LIVING ROOM
- DRIVE & GARAGE
- WELL PLACED FOR EASY ACCESS TO THE A1M MOTORWAY

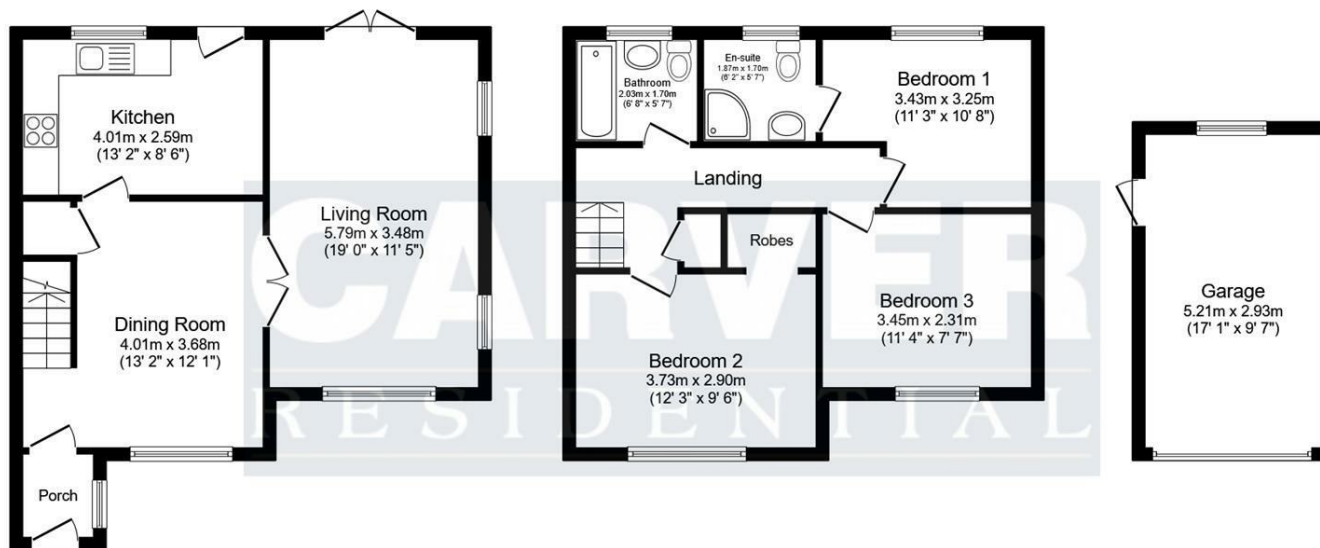
#### GENERAL INFORMATION

Tenure: Freehold

Services: gas central heating, mains electric, water and drainage.

Double glazing

Local Authority: Darlington Borough Council (Tax Banding B)



**Ground Floor**  
 Floor area 49.6 sq.m. (534 sq.ft.)

**First Floor**  
 Floor area 47.9 sq.m. (515 sq.ft.)

**Garage**  
 Floor area 15.3 sq.m. (164 sq.ft.)

Total floor area: 112.8 sq.m. (1,214 sq.ft.)

This floor plan is for illustrative purposes only. It is not drawn to scale. Any measurements, floor areas (including any total floor area), openings and orientations are approximate. No details are guaranteed, they cannot be relied upon for any purpose and do not form any part of any agreement. No liability is taken for any error, omission or misstatement. A party must rely upon its own inspection(s). Powered by www.Propertybox.io

Energy Efficiency Rating		Current	Potential
Very energy efficient - lower running costs			
(92 plus) <b>A</b>			<b>84</b>
(81-91) <b>B</b>			
(69-80) <b>C</b>			
(55-68) <b>D</b>			
(39-54) <b>E</b>			
(21-38) <b>F</b>		<b>71</b>	<b>71</b>
(1-20) <b>G</b>			
Not energy efficient - higher running costs			
<b>England &amp; Wales</b>		EU Directive 2002/91/EC	

**We can search 1,000s of mortgages for you**

It could take just 15 minutes with one of our specialist advisers:  
 Call: 01325 380088. Visit: Any of our Offices. Online: [www.mortgageadvicebureau.com/carver](http://www.mortgageadvicebureau.com/carver)



Your home may be repossessed if you do not keep up repayments on your mortgage.  
 There will be a fee for mortgage advice. The actual amount you pay will depend upon your circumstances.  
 The fee is up to 1% but a typical fee is 0.3% of the amount borrowed

MAB 6202



These particulars do not constitute any part of an offer or contract. None of the statements contained in these particulars are to be relied on as statements or representations of fact and any intending purchaser must satisfy himself by inspection or otherwise to the correctness of each of the statements contained in these particulars. The vendor does not make or give, and neither Nick & Gordon Carver Residential or Commercial, Nick & Gordon Carver, nor any person in their employment has any authority to make or give any representation or warranty whatever in relation to this property



14 Duke Street, Darlington  
 Co Durham, DL3 7AA  
 01325 357807  
[sales@carvergroup.co.uk](mailto:sales@carvergroup.co.uk)

63 Dalton Way, Newton Aycliffe  
 Co Durham DL5 4NB  
 01325 320676  
[aycliffe@carvergroup.co.uk](mailto:aycliffe@carvergroup.co.uk)

41 Market Place, Richmond  
 North Yorkshire, DL10 4QL  
 01748 825317  
[richmond@carvergroup.co.uk](mailto:richmond@carvergroup.co.uk)

219 High Street, Northallerton  
 North Yorkshire DL7 8LW  
 01609 777710  
[northallerton@carvergroup.co.uk](mailto:northallerton@carvergroup.co.uk)